



A2A Spacer is a pocket-size, valved holding chamber (VHC); collapsible for improved portability.

A2A Spacer is made from anti-microbial, low-static, transparent plastic for improved hygiene.

Product Information

A2A works as well as a nebuliser at treating asthma attacks. A2A has been designed with visible valve movement, this helps the carer to see if the patient is receiving medication effectively.

A2A overcomes the problem of breathe and press co-ordination, giving the patient more of an opportunity to inhale their medication.

What is this Product used for?

A2A Spacer is designed to help deliver medication from a pressurised metered dose inhaler (pMDI) to the lungs, by improving co-ordination and medication deposition.



Product Features and Benefits

- Collapsible, pocket-size, VHC
- Easy to clean
- Inhibits microbial growth
- Low-static property
- Visible valve movement
- Available with or without mask
- Performance validated
- Accepts majority of pMDIs available
- 208ml, consistent with optimal performance
- Suitable for both children and adults
- Suitable for local assembly

Product Suitability



Technical Specifications

Volume:	208ml
Dimensions:	145 x 56 x 68mm (open) 100 x 56 x 68mm (closed)
Weight:	55g
Resistance to flow:	6mm of water @ 30 litres/minute

Part Codes

A2A in a box:	3607100
A2A with a small mask:	3607102
A2A with a medium mask:	3607103

Consumables

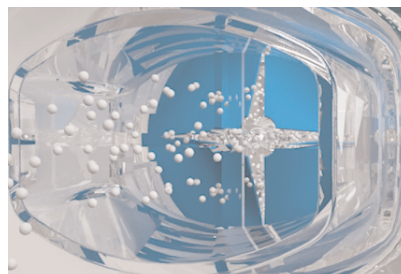
A2A Masks

Masks specifically designed for use with A2A. Comfortable for the patient and easy to connect; masks are made from phthalate-free, anti-microbial, low static PVC.



Visible Valve Movement

Facilitates training; helps carer to see if patient is inhaling appropriately.



Distributed by: